

ZV-355

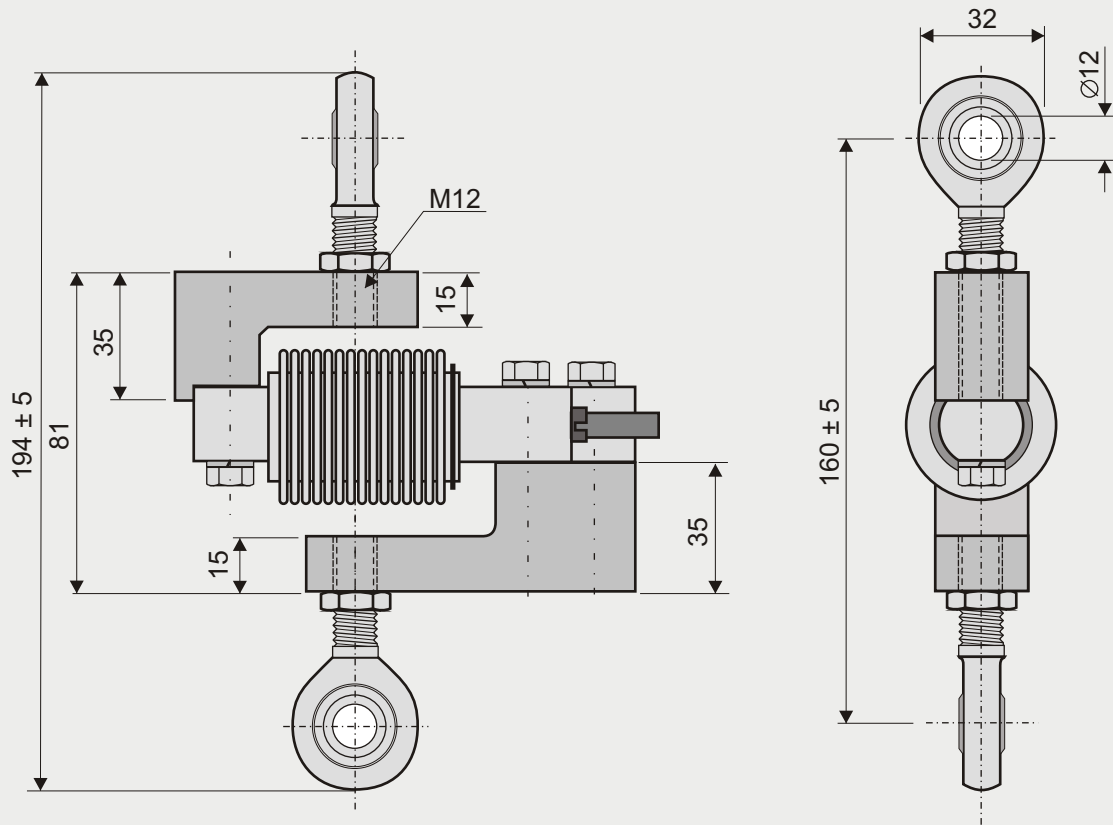
S Type Mount for Model 355

SENSOR
TECHNIQUES LIMITED

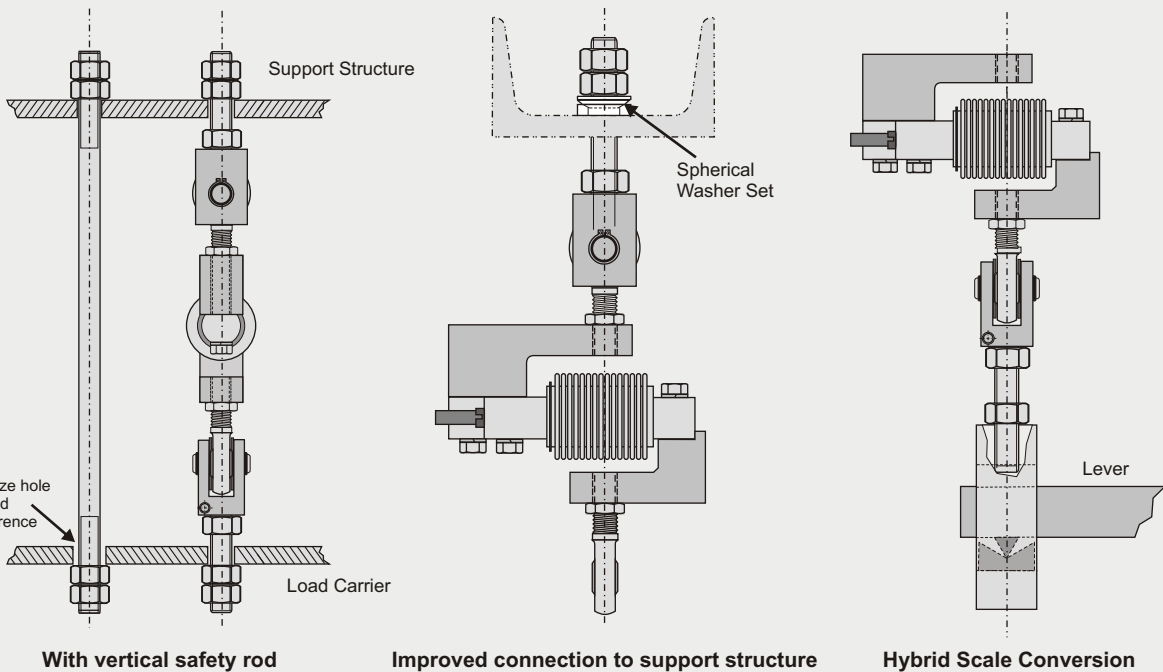


S Type Mount for Model 355 Load Cell

- Allows Model 355 to be used in S type applications
- Can be used with load cell capacities 5 kg - 250 kg
- Stainless steel construction
- Produces a very high accuracy results
- Quick, simple installation
- Applications include hybrid scale conversions
- Complete mount including swivel bearings & bolts



Note:
All parts must be precisely aligned horizontally. For optimal accuracy, the swivel bearings must be mounted at 90° to each other.



All Dimensions in mm
Specifications are subject to change without prior notice

DS-ZV-355-1, 05/09